



m a l l y

City Chick
smoky eye
kit

Hey Ladies!

Thank you so much for joining me in the joyful experience that is Mally Beauty... Here, we love being a Girl, a Woman, truly celebrating and reveling in being Female!

There is nothing I love more than sharing my secrets and tricks with women so that they can feel their best. I want you to feel strong, sexy, and confident so that you can go out there and conquer the world. I want you to forget all that negative stuff you may have heard and realize that we are not all beauty clones. Love yourself... Whatever makes you different makes you beautiful, that's what I was always taught growing up. I want my makeup to become part of your beauty ritual. Whether you take three minutes to get ready or three hours, (yeah right!), I want to make products that make you look and feel sensational all day long. I want it to be easy and I want you to love every second of it.

I have always loved makeup and skin.

Since I was a child, I have put makeup on anything that was not nailed down. My parents were doctors so I just assumed that that's what I was going to be, but I couldn't deny my passion for makeup. So, I worked really hard, got a great agent that believed in me and years later, here we are. I found that I could do what I loved... Follow your dreams, they *can* become a reality!

As much as I love working with all those glamorous celebrities, what I REALLY adore is working with babes like you! In designing this line, I took all my years of tips and tricks and really thought about us REAL GIRLS and our needs. We have to go out and be Superwoman, look fabulous doing it, and get there in a snap. My stuff is fool proof, easy, gorgeous... no drama... just fabulous YOU!

m a l l y

City Chick
smoky eye kit

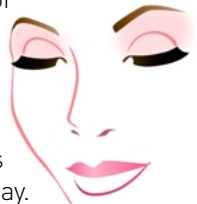
EYE SHADOW BASE INGREDIENTS: Ethylhexyl Palmitate, Isohexyl Caprate, Nylon 12, Caprylic/Capric Triglyceride, Polyethylene, Microcrystalline Wax, Kaolin, Zinc Oxide, Copernicia Cerifera (Carnauba) Wax, PPG-12/SMDI Copolymer, Retinyl Palmitate, Tocopherol. MAY CONTAIN: Titanium Dioxide, Iron Oxides, Ultramarines. CREASE, LIDCOLOR, & BROWLIGHTER INGREDIENTS: Talc, Ethylhexyl Palmitate, Zinc Stearate, Sodium Dehydroacetate, Methylparaben, Tocopherol, Propylparaben, Butylparaben, Ascorbyl Palmitate. MAY CONTAIN: Mica, Iron Oxides, Titanium Dioxide, Ultramarines, Bismuth Oxychloride, Silica, Manganese Violet

Distributed by **Mallygirl LLC**
P.O. Box 20194 • West Village Station • New York, NY 10014-9998
Product made in Canada • Pencil made in USA

I LOVE SMOKY EYES!

Sexy, mysterious, alluring, chic, cool... It seems really complicated, right? Not with my smoky eye kit! It absolutely takes all the guesswork out of it. Just smooth on my cream to powder base, this will keep your smoky eyes smoldering all day.

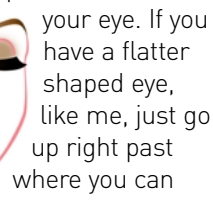
Then, take the lightest shadow and lightly dust it all over the lid all the way to the browbone.



Next, take the medium tone and lay it from the lashline to just past the crease of your eye. If you have a flatter shaped eye, like me, just go up right past where you can feel your eyeball sit in your socket, then blend up.

Take the darkest tone and run that all over the lashline, top and bottom.

Finally, finish off with the pencil liner on top.



Finally, finish off with the pencil liner on top.

The eye liner shades in both kits (Brownstone and Skyscraper... get it? CITY chick?) are softer than harsh blacks, so you can have smokin' eyes anytime.



To find these and order more great **m a i l y** products visit: www.qvc.com

- **Shimmer, Shape, & Glow** face defining system
 - **Light Wand** eye brightener
 - **City Chick** smoky eye kit
- **Life, Love, & A Really Great Lipgloss**
 - **Visible Skin** adjustable coverage foundation
 - **Get the Last Lash** eyelash curler
 - **Paint the Town** ultimate brush set